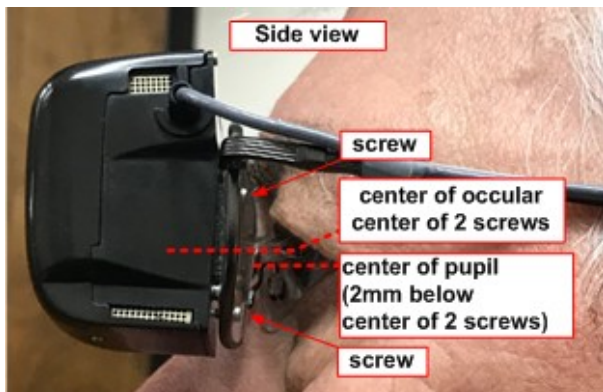


seeBOOST Fitting Instructions

Step #1: Vertical adjustment

Adjust the nose pieces to place the center of ocular (between the two screws, see Side View) approximately 2mm above the center of the pupil when looking straight ahead.



Step #2: Horizontal adjustment

Ensure seeBOOST is snug to the patient's face using the nose bridge, and the frames are evenly centered on the patient's face.

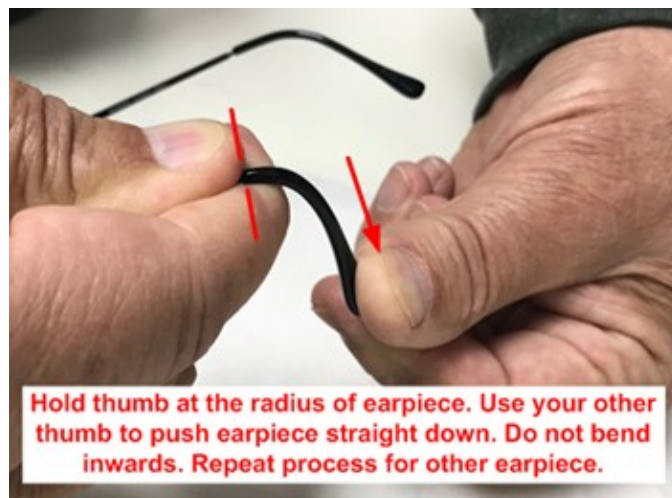


Looking down on the patient's head, confirm that the ocular is centered horizontally onto the pupil. If not, you can offset the nose pieces slightly to compensate for that misalignment.



Step #3: Earpieces adjustment

Adjust earpieces to assure the frames do not slide down the nose when tugged slightly at the bridge (or when patient's head is tilted straight downwards).



Pull down on the bridge of the seeBOOST to ensure they do not fall down. If they slide down, adjust the nosepiece and earpieces as needed.



Step #4: Recheck

- Ask patient to remove the glasses and then put them on again.
- Confirm glasses remain properly aligned vertically on the nose bridge (if not, repeat procedure as needed)
- Repeat this procedure one more time (to help patient remember).

**If you have any questions, please call us at
(972) 643-8498**